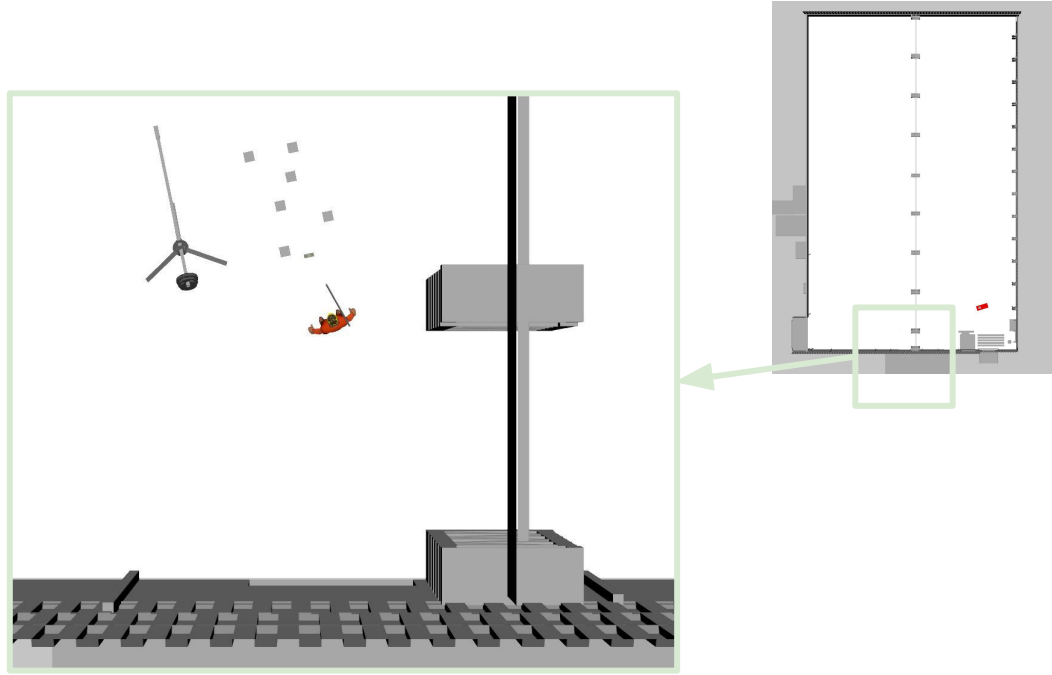
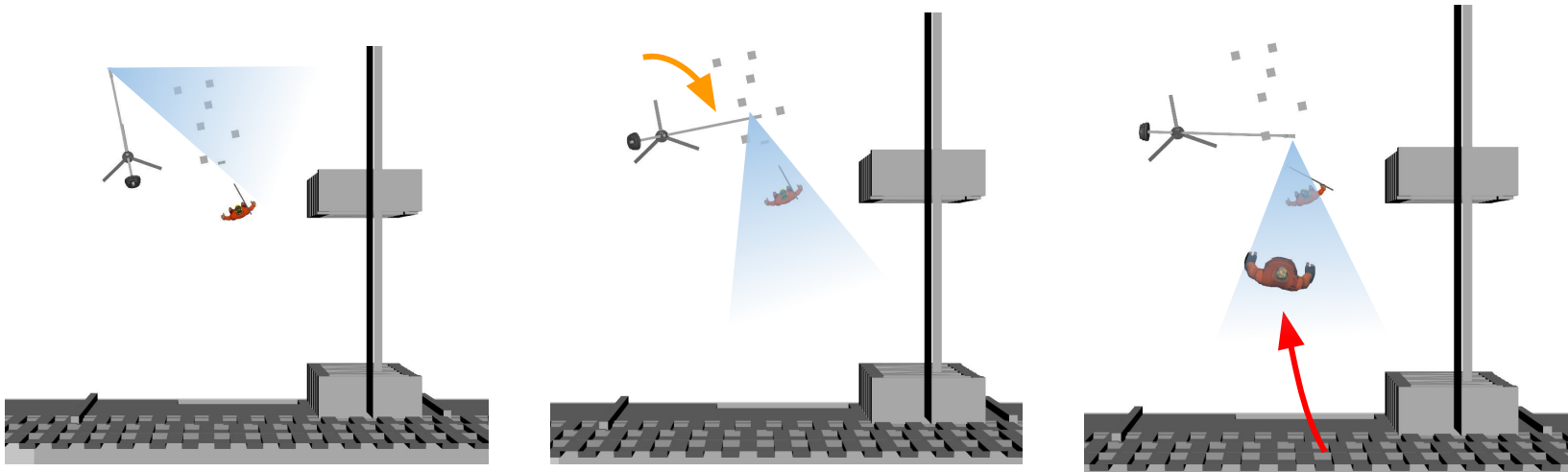


Motherload {AKA. Escape} Camera Setups

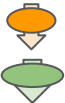
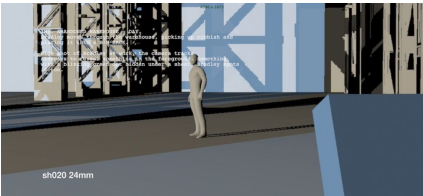
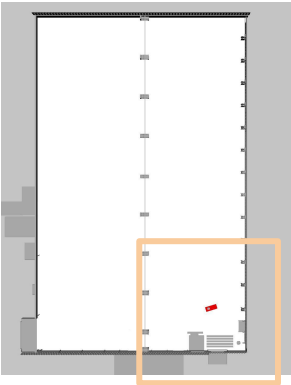
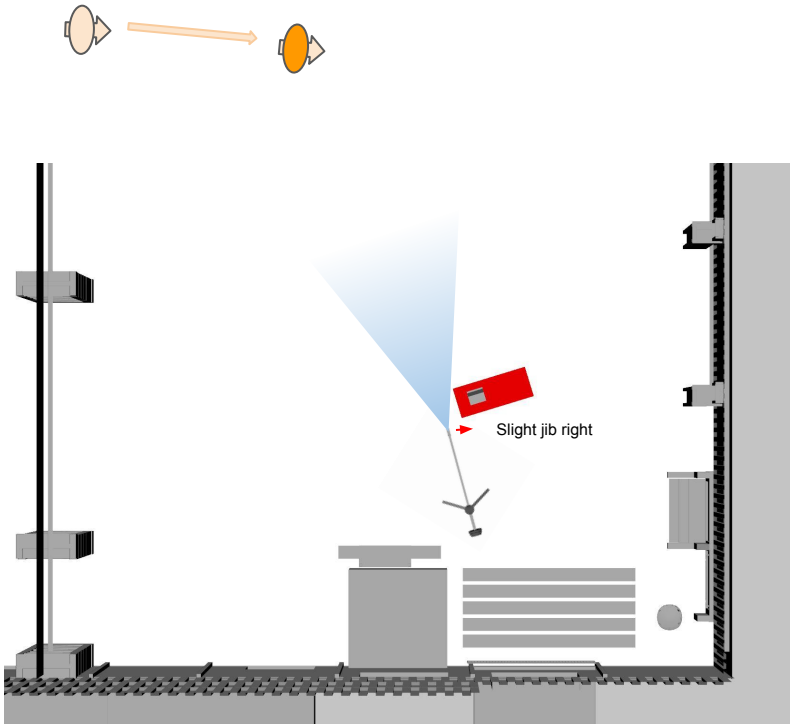
Show order	Shot	Lens	Scene	Direction	Russell	Laura
3	sh030	24mm	2	Desk		X
8	sh070 a	35mm	2	Desk		X
10	sh070 b	35mm	2	Desk		X
12	sh070 c	35mm	2	Desk		X
14	sh070 d	35mm	2	Desk		X
26	sh180 a	24mm	3	Desk	X	X
30	sh180 b	24mm	3	Desk	X	X
17	sh120 a	35mm	3	Desk		X
20	sh120 b	35mm	3	Desk		X
24	sh160	24mm	3	Desk		X
15	sh090	24mm	2	Desk		X
39	sh230	35mm	4	Desk		X
22	sh150	24mm	3	Desk		X
25	sh170	50mm	3	Desk	X	X
27	sh190	70mm	3	Desk	X	X
31	sh191	70mm	3	Desk	X	X
34	sh192	70mm	3	Desk		X
37	sh195	70mm	4	Desk		X
5	sh050	24mm	2	Wide		X
23	sh051	24mm	3	Wide		X
2	sh020	24mm	2	Back wall		X
4	sh040 a	24mm	2	Back wall		X
6	sh040 b	24mm	2	Back wall		X
7	sh060 a	24mm	2	Back wall		X
9	sh060 b	24mm	2	Back wall		X
13	sh060 c	24mm	2	Back wall		X
11	sh080	35mm	2	Back wall		X
19	sh100	35mm	3	Back wall		X
18	sh130	35mm	3	Back wall		X
29	sh200	35mm	3	Back wall	X	X
32	sh210	70mm	3	Back wall	X	X
33	sh220 a	35mm	3	Side on	X	X
35	sh220 b	35mm	3	Side on	X	X
38	sh225 a	35mm	4	Side on	X	X
40	sh225 a	35mm	4	Side on	X	X
1	sh010	24mm	1	Gate	X	X
16	sh110	24mm	3	Machine		X
21	sh111	24mm	3	Machine		X
28	sh112	24mm	3	Machine	X	
36	sh113	24mm	3	Machine	X	





Motherload {AKA. Escape} Camera Setups

CAM_020



= Bradley



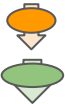
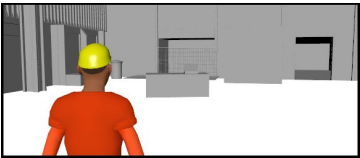
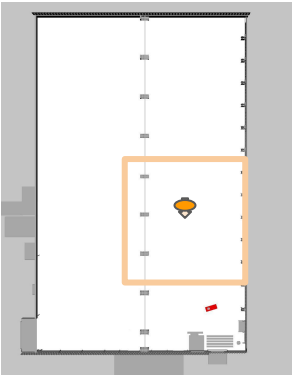
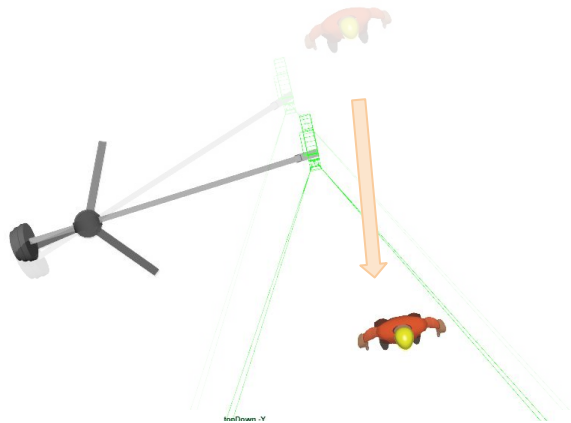
= Cooper



= Jib

Motherload {AKA. Escape} Camera Setups

CAM_030



= Bradley



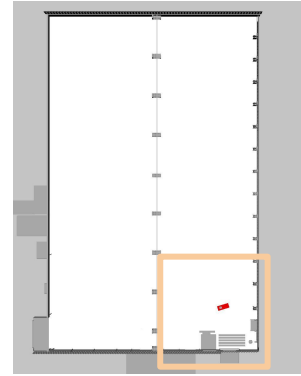
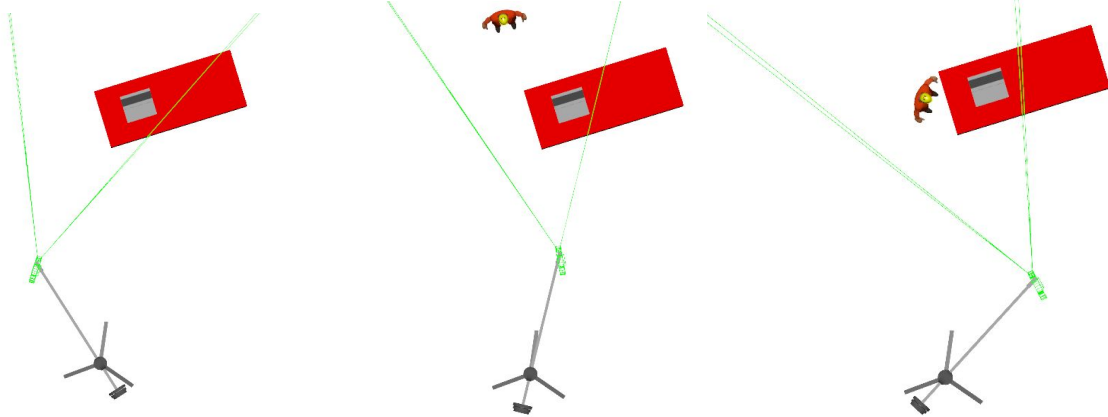
= Cooper



= Jib

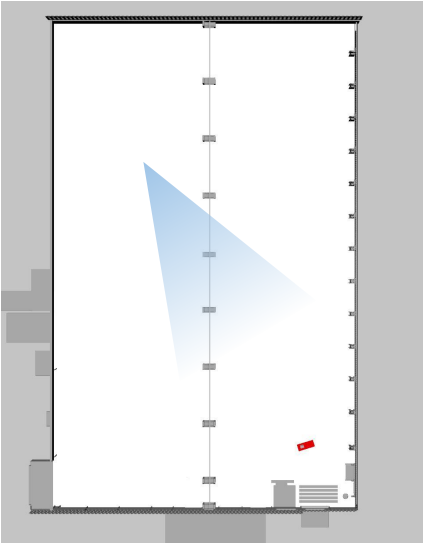
Motherload {AKA. Escape} Camera Setups

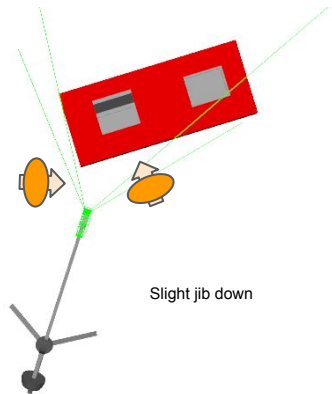
CAM_040



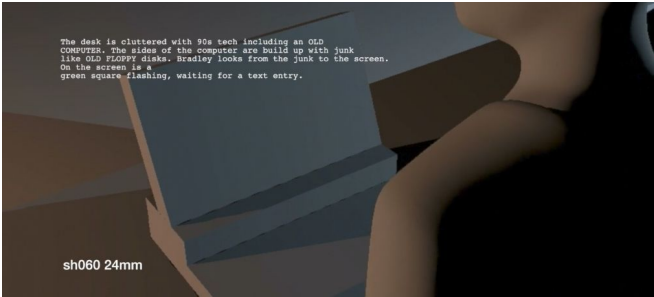
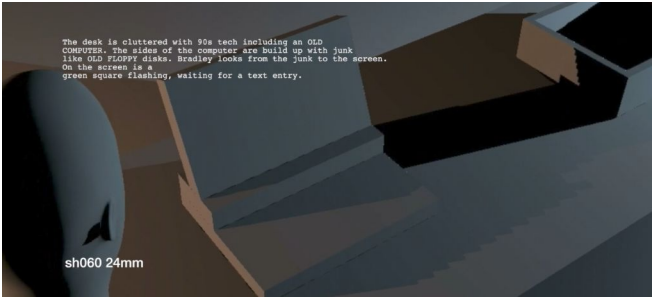
Motherload {AKA. Escape} Camera Setups

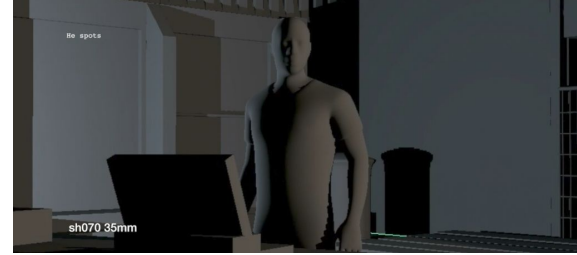
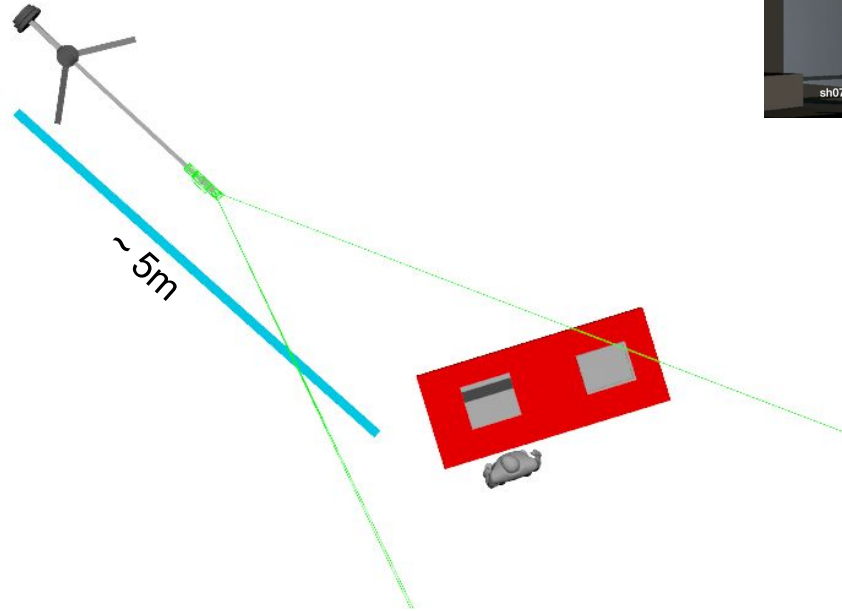
CAM_050

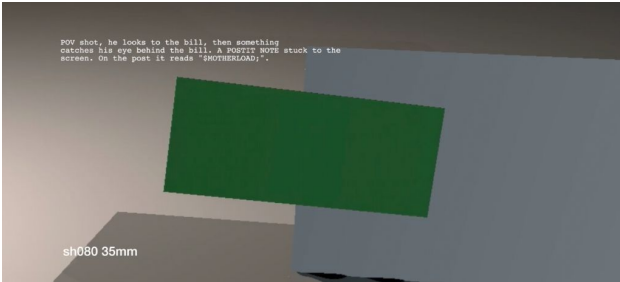
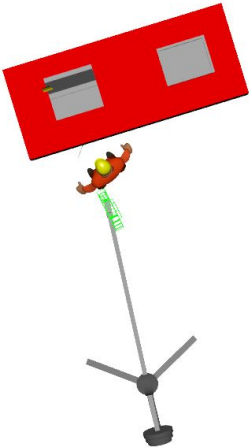


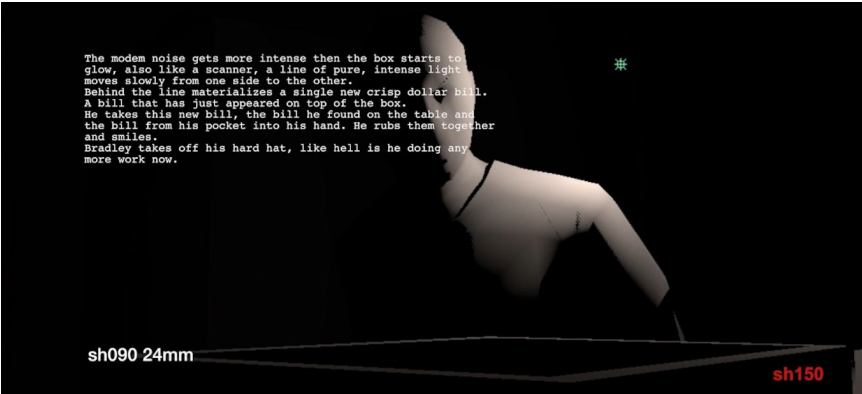
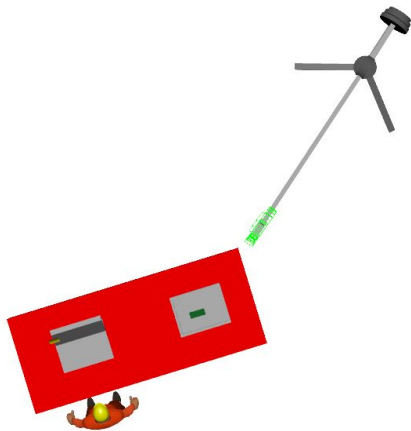


Slight jib down

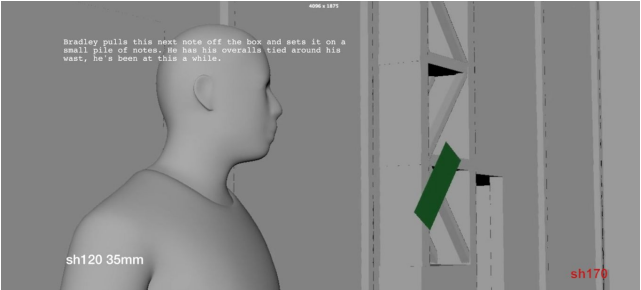
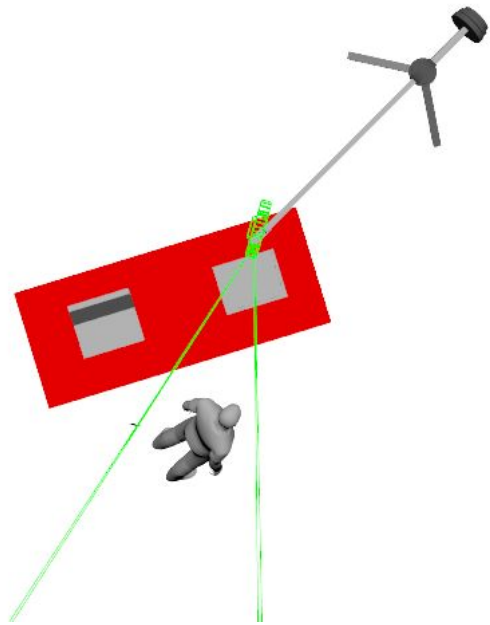






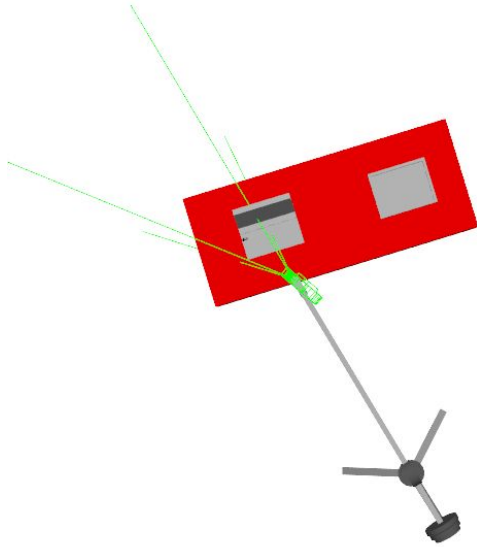


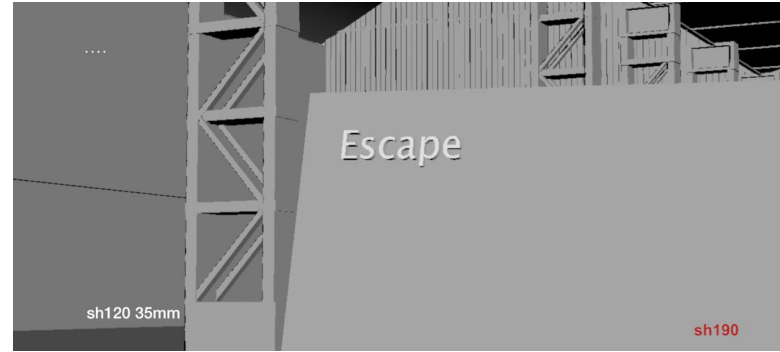
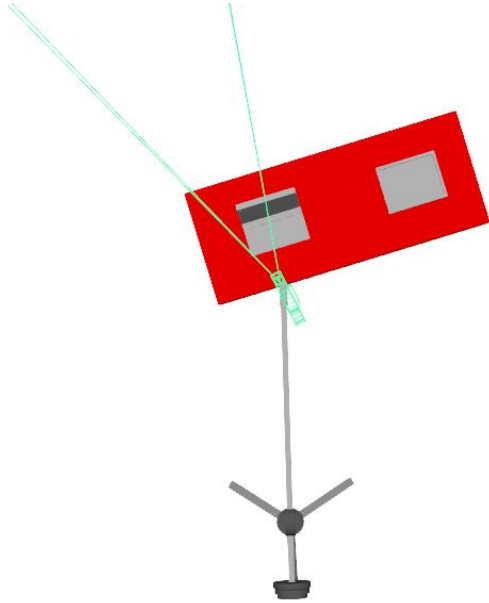
Magic Box Setup

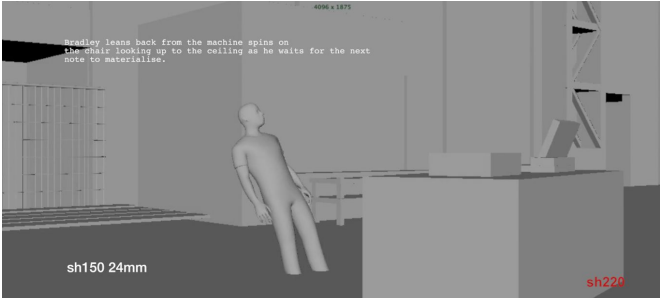
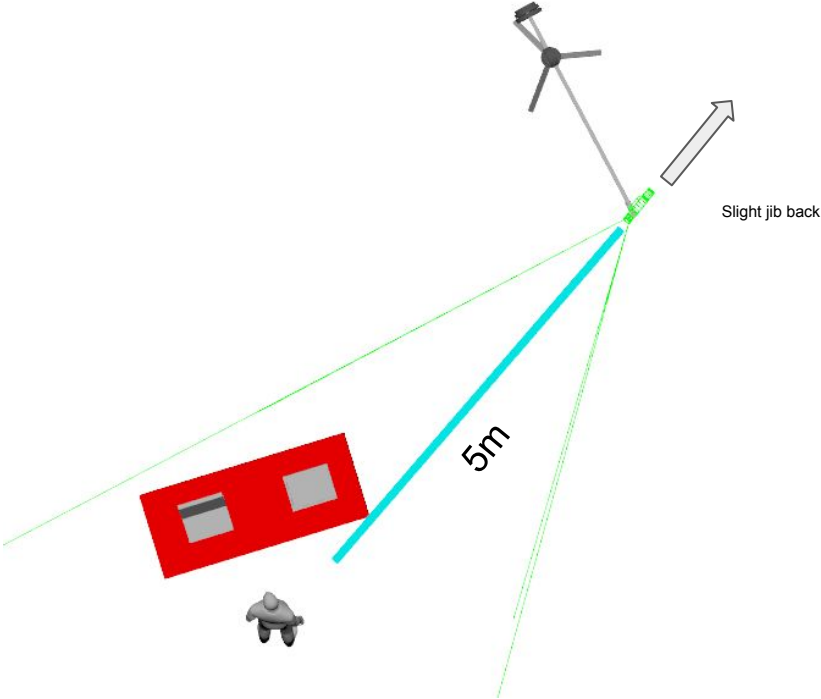


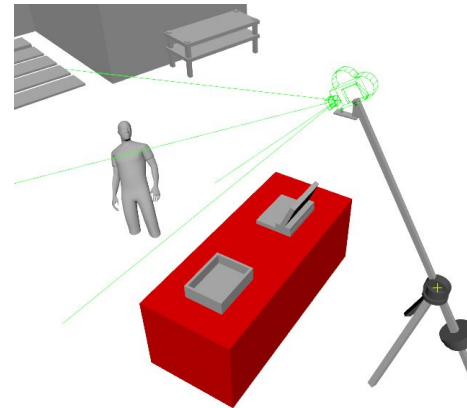
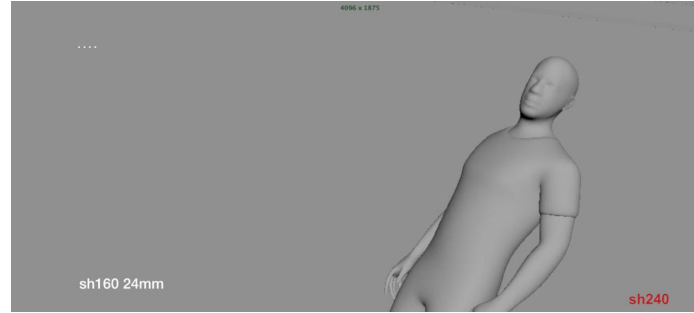
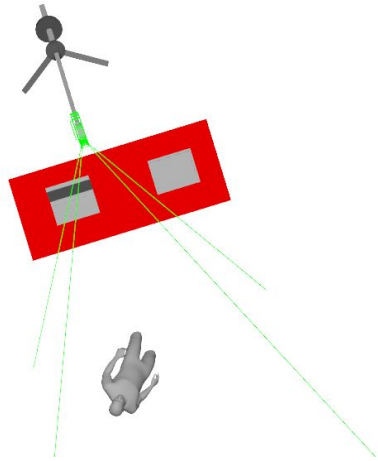
Motherload {AKA. Escape} Camera Setups

CAM_130



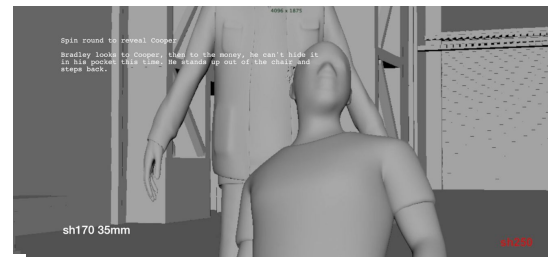
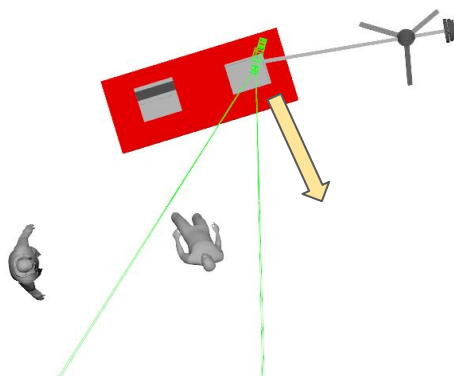




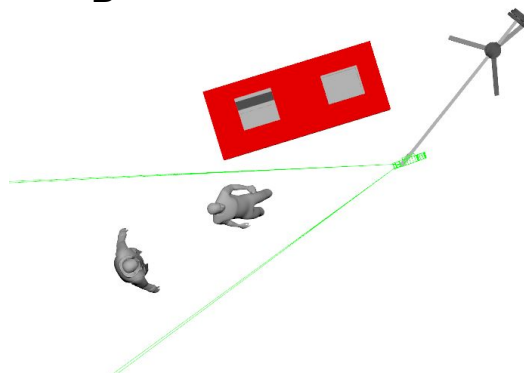


Note: High Angle

A



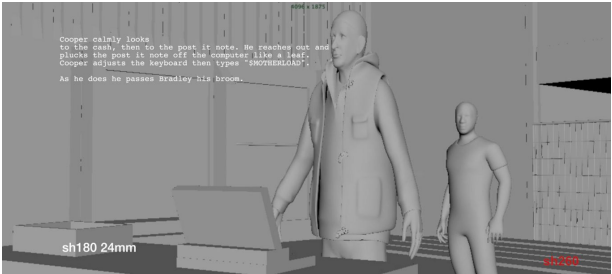
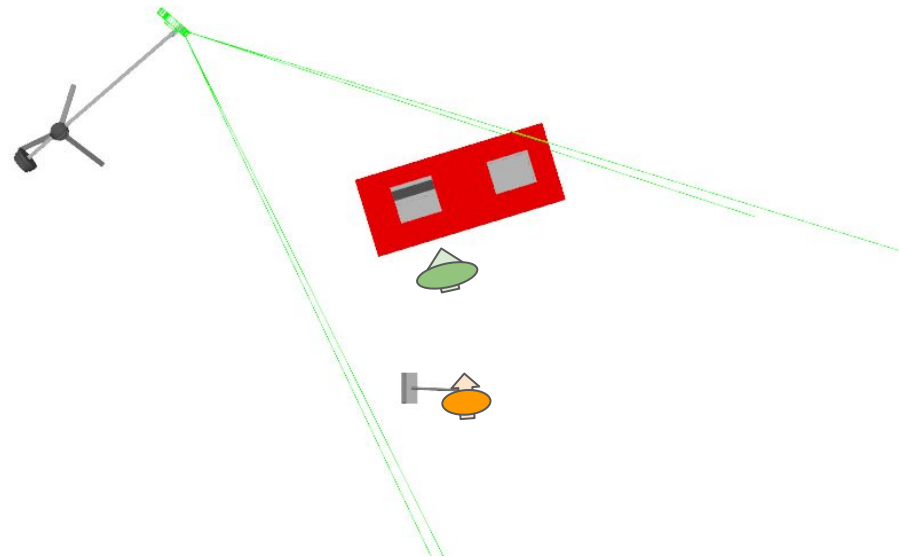
B

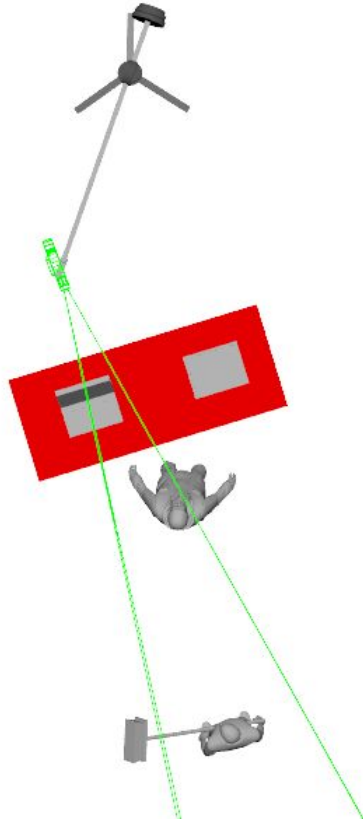


Possible lens
change to 50mm

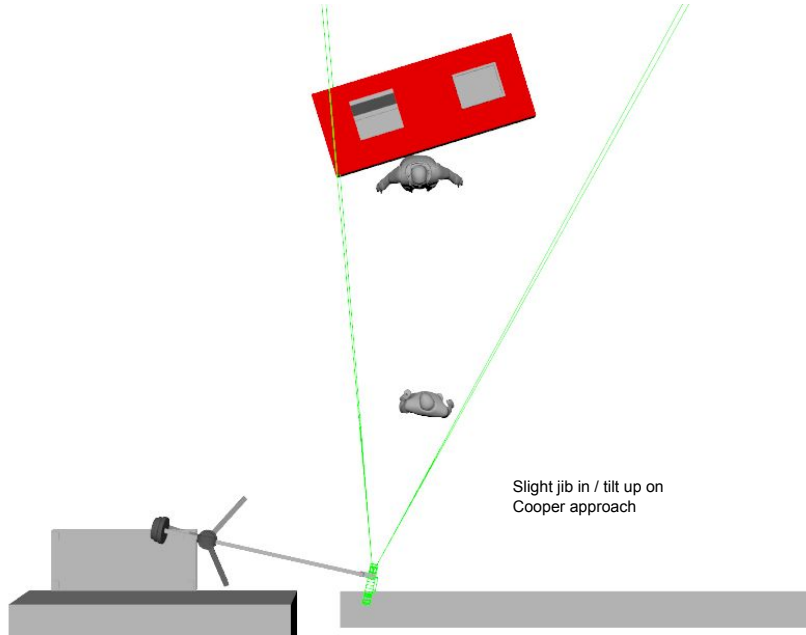
Motherload {AKA. Escape} Camera Setups

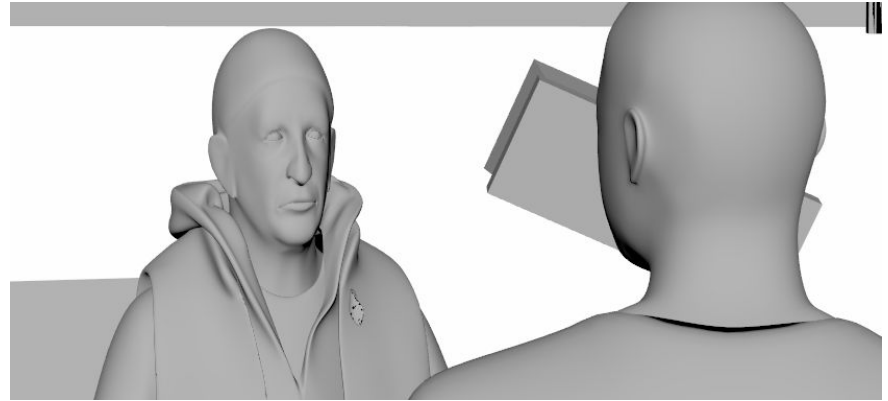
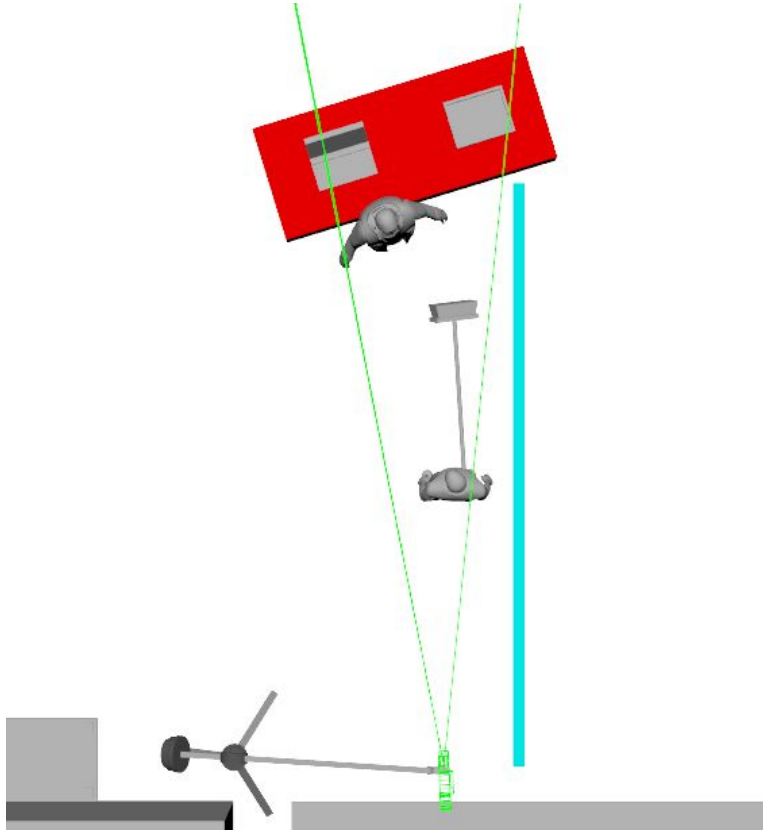
CAM_180



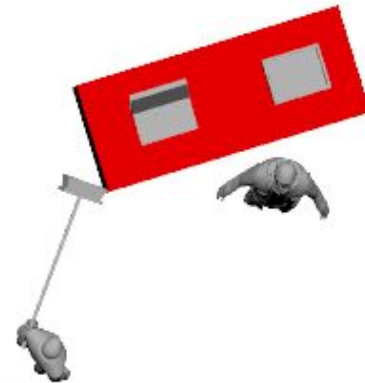
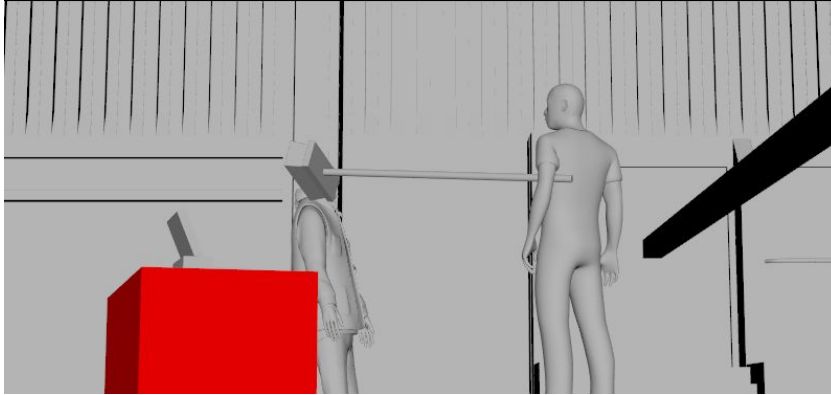


70mm





70mm



< ~8m >

FX Comp?

